

# PARTS LIST

## CAUTION

- The parts identified by the  $\triangle$  symbol are important for the safety. Whenever replacing these parts, be sure to use specified ones to secure the safety.
- The parts not indicated in this Parts List and those which are filled with lines — in the Parts No. columns will not be supplied.
- P. W. Board Ass'y will not be supplied, but those which are filled with the Parts No. in the Parts No. columns will be supplied.

## ABBREVIATIONS OF RESISTORS, CAPACITORS AND TOLERANCES

RESISTORS		CAPACITORS	
C R	Carbon Resistor	C CAP.	Ceramic Capacitor
F R	Fusible Resistor	E CAP.	Electrolytic Capacitor
P R	Plate Resistor	M CAP.	Mylar Capacitor
V R	Variable Resistor	HV CAP.	High Voltage Capacitor
HV R	High Voltage Resistor	MF CAP.	Metalized Film Capacitor
MF R	Metal Film Resistor	MM CAP.	Metalized Mylar Capacitor
MG R	Metal Glazed Resistor	MP CAP.	Metalized Polystyrol Capacitor
MP R	Metal Plate Resistor	PP CAP.	Polypropylene Capacitor
OM R	Metal Oxide Film Resistor	PS CAP.	Polystyrol Capacitor
CMF R	Coating Metal Film Resistor	TF CAP.	Thin Film Capacitor
UNF R	Non-Flammable Resistor	MPP CAP.	Metalized Polypropylene Capacitor
CH V R	Chip Variable Resistor	TAN. CAP.	Tantalum Capacitor
CH MG R	Chip Metal Glazed Resistor	CH C CAP.	Chip Ceramic Capacitor
COMP. R	Composition Resistor	BP E CAP.	Bi-Polar Electrolytic Capacitor
LPTC R	Linear Positive Temperature Coefficient Resistor	CH AL E CAP.	Chip Aluminum Electrolytic Capacitor
		CH AL BP CAP.	Chip Aluminum Bi-Polar Capacitor
		CH TAN. E CAP.	Chip Tantalum Electrolytic Capacitor
		CH AL BP E CAP.	Chip Tantalum Bi-Polar Electrolytic Capacitor

TOLERANCES									
F	G	J	K	M	N	R	H	Z	P
±1%	±2%	±5%	±10%	±20%	±30%	+30% -10%	+50% -10%	+80% -20%	+100% -0%

## CONTENTS

■ USING PW BOARD & REMOTE CONTROL UNIT .....	32
■ EXPLODED VIEW PARTS LIST .....	32
■ EXPLODED VIEW .....	33
■ PRINTED WIRING BOARD PARTS LIST	
● MAIN PW BOARD ASS'Y (SCG-1423A) (With CRT SOCKET PW BOARD) .....	34
■ REMOTE CONTROL UNIT PARTS LIST .....	38
■ PACKING .....	39
■ PACKING PARTS LIST .....	39

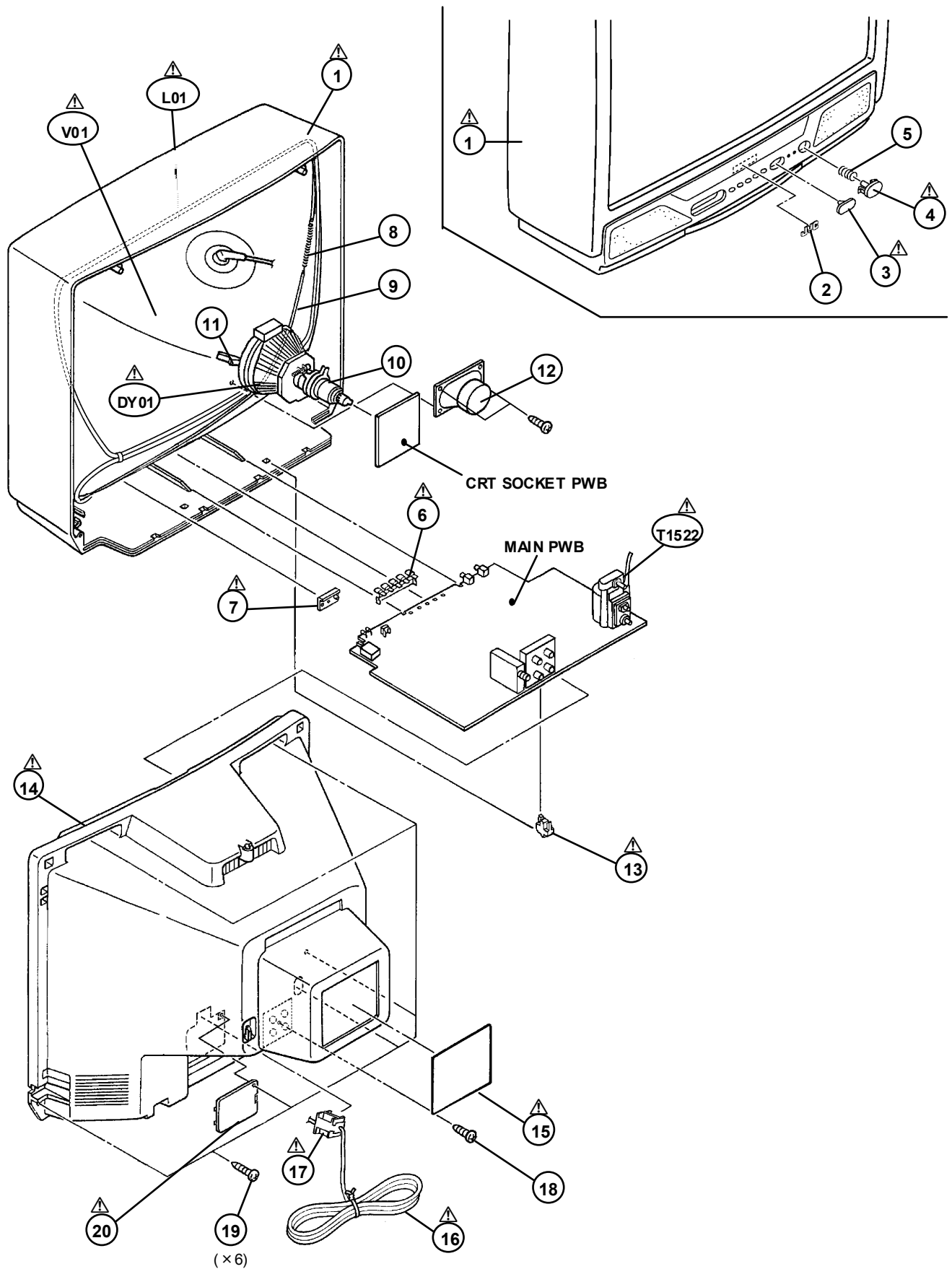
## USING PW BOARD & REMOTE CONTROL UNIT

Model	AV-21A10/F
PWB ASS'Y	
MAIN PWB	SCG-1423A
REMOTE CONTROL UNIT	RM-C364GY-1H

## EXPLODED VIEW PARTS LIST

△ Ref.No.	Part No.	Part Name	Description
△ V01	A51KQK99X	PICTURE TUBE	
△ L01	QQW0124-001	DEG COIL	
△ DY01	QQD0061-001	DEF YOKE	
△ T1522	QQH0102-001	H.V. TRANSF.	
△ 1	GG10047-006A-HK	FRONT CABI ASSY	
△ 2	CM43094-009-H	JVC MARK	
△ 3	CM36375-001-H	CDS WINDOW	
△ 4	CM36516-004-H	POWER KNOB	
△ 5	CM35235-012-H	SPRING	
△ 6	CM36517-004-H	CONTROL KNOB	
△ 7	CM36518-001-H	LED LENS	
△ 8	A48457-1	SPRING	
△ 9	CHGB0016-0B-N	BRAIDED ASSY	
△ 10	A75034-B	PC MAGNET	
△ 11	CE42153-00AJ1	WEDGE ASSY	(× 3)
△ 12	CEB5509D-03KJ2	SPEAKER	SP01
△ 13	CM48144-002-H	PWB STOPPER	
△ 14	CM12863-A02-KH	REAR COVER	
△ 15	GG20014-002A-H	RATING LABEL	
△ 16	QMPR340-165-K2	POWER CORD	
△ 17	CM23167-A01-H	POWER CORD CLAM	
△ 18	QYSB5F3010Z	TAP SCREW	(× 1)
△ 19	QYSB5FG4016Z	TAP SCREW	(× 6)
△ 20	CM36617-B01-H	BACK BOARD	

# EXPLODED VIEW



# PRINTED WIRING BOARD PARTS LIST

## MAIN P.W. BOARD ASS'Y (SCG-1423A)

△ Symbol No.	Part No.	Part Name	Description
<b>RESISTOR</b>			
R1002	NRSA02J-221X	MG R	220Ω 1/10W J
R1003	NRSA02J-221X	MG R	220Ω 1/10W J
R1004	NRSA02J-563X	MG R	56kΩ 1/10W J
R1102	NRSA02J-750X	MG R	75Ω 1/10W J
R1103	NRSA02J-100X	MG R	10Ω 1/10W J
R1109	NRSA02J-682X	MG R	6.8kΩ 1/10W J
R1110	NRSA02J-272X	MG R	2.7kΩ 1/10W J
R1111	NRSA02J-181X	MG R	180Ω 1/10W J
R1112	NRSA02J-100X	MG R	10Ω 1/10W J
R1113	NRSA02J-101X	MG R	100Ω 1/10W J
R1120	NRSA02J-391X	MG R	390Ω 1/10W J
R1121	NRSA02J-221X	MG R	220Ω 1/10W J
R1139	NRSA02J-184X	MG R	180kΩ 1/10W J
R1301	NRSA02J-221X	MG R	220Ω 1/10W J
R1302	NRSA02J-472X	MG R	4.7kΩ 1/10W J
R1303	NRSA02J-101X	MG R	100Ω 1/10W J
R1304	NRSA02J-101X	MG R	100Ω 1/10W J
R1305	NRSA02J-101X	MG R	100Ω 1/10W J
R1306	NRSA02J-221X	MG R	220Ω 1/10W J
R1307	NRSA02J-122X	MG R	1.2kΩ 1/10W J
R1308	NRSA02J-182X	MG R	1.8kΩ 1/10W J
R1312	NRSA02J-0R0X	MG R	0.0Ω 1/10W J
R1313	NRSA02J-102X	MG R	1kΩ 1/10W J
R1314	NRSA02J-102X	MG R	1kΩ 1/10W J
R1321	NRSA02J-152X	MG R	1.5kΩ 1/10W J
R1322	NRSA02J-272X	MG R	2.7kΩ 1/10W J
R1323	NRSA02J-103X	MG R	10kΩ 1/10W J
R1324	NRSA02J-102X	MG R	1kΩ 1/10W J
R1326	NRSA02J-101X	MG R	100Ω 1/10W J
R1327	NRSA02J-475X	MG R	4.7MΩ 1/10W J
R1341	NRSA02J-332X	MG R	3.3kΩ 1/10W J
R1347	NRSA02J-392X	MG R	3.9kΩ 1/10W J
R1349	NRSA02J-472X	MG R	4.7kΩ 1/10W J
R1351	NRSA02J-151X	MG R	150Ω 1/10W J
R1352	NRSA02J-151X	MG R	150Ω 1/10W J
R1353	NRSA02J-151X	MG R	150Ω 1/10W J
R1354	NRSA02J-331X	MG R	330Ω 1/10W J
R1355	NRSA02J-331X	MG R	330Ω 1/10W J
R1356	NRSA02J-331X	MG R	330Ω 1/10W J
R1357	NRSA02J-101X	MG R	100Ω 1/10W J
R1358	NRSA02J-101X	MG R	100Ω 1/10W J
R1359	NRSA02J-101X	MG R	100Ω 1/10W J
R1360	QRZ0107-152Z	C R	1.5kΩ 1/2W K
R1361	QRZ0107-152Z	C R	1.5kΩ 1/2W K
R1362	QRZ0107-152Z	C R	1.5kΩ 1/2W K
R1363	QRL029J-123	OM R	12kΩ 2W J
R1364	QRL029J-123	OM R	12kΩ 2W J
R1365	QRL029J-123	OM R	12kΩ 2W J
R1366	NRSA02J-182X	MG R	1.8kΩ 1/10W J
R1367	NRSA02J-182X	MG R	1.8kΩ 1/10W J
R1368	NRSA02J-182X	MG R	1.8kΩ 1/10W J
R1372	NRSA02J-0R0X	MG R	0.0Ω 1/10W J
R1374	NRSA02J-682X	MG R	6.8kΩ 1/10W J
R1401	NRSA02J-103X	MG R	10kΩ 1/10W J
R1421	NRSA02J-472X	MG R	4.7kΩ 1/10W J
R1423	NRSA02J-0R0X	MG R	0.0Ω 1/10W J
R1424	NRSA02J-0R0X	MG R	0.0Ω 1/10W J
R1425	NRSA02J-332X	MG R	3.3kΩ 1/10W J
R1426	NRSA02J-0R0X	MG R	0.0Ω 1/10W J
R1429	NRSA02J-103X	MG R	10kΩ 1/10W J
R1430	NRSA02J-823X	MG R	82kΩ 1/10W J
R1431	NRSA02J-103X	MG R	10kΩ 1/10W J
R1432	QRE122J-3R9	C R	3.9Ω 1/2W J
R1433	QRE122J-2R7	C R	2.7Ω 1/2W J
R1436	NRSA02J-823X	MG R	82kΩ 1/10W J
R1440	QRE122J-471	C R	470Ω 1/2W J
R1441	NRSA02J-822X	MG R	8.2kΩ 1/10W J
R1442	NRSA02J-103X	MG R	10kΩ 1/10W J
R1443	QRE122J-1R0	C R	1.0Ω 1/2W J
R1453	NRSA02J-272X	MG R	2.7kΩ 1/10W J
R1501	QRE122J-221	C R	220Ω 1/2W J
R1502	NRSA02J-0R0X	MG R	0.0Ω 1/10W J
R1503	NRSA02J-682X	MG R	6.8kΩ 1/10W J

△ Symbol No.	Part No.	Part Name	Description
<b>RESISTOR</b>			
R1525	QRL029J-330	OM R	33Ω 2W J
R1526	QRE122J-271	C R	270Ω 1/2W J
R1529	QRL039J-681	OM R	680Ω 3W J
R1531	NRSA02J-331X	MG R	330Ω 1/10W J
R1532	NRSA02J-102X	MG R	1kΩ 1/10W J
△ R1551	QRZ0111-1R0	F R	1.0Ω 1/2W J
△ R1552	QRJ146J-2R2X	C R	2.2Ω 1/4W J
R1554	QRE122J-681	C R	680Ω 1/2W J
R1571	QRE122J-222	C R	2.2kΩ 1/2W J
R1573	QRT029J-1R5	MF R	1.5Ω 2W J
R1574	QRT029J-1R5	MF R	1.5Ω 2W J
R1576	QRE122J-223	C R	22kΩ 1/2W J
R1577	NRSA02J-392X	MG R	3.9kΩ 1/10W J
R1578	NRSA02J-103X	MG R	10kΩ 1/10W J
R1581	QRE122J-182	C R	1.8kΩ 1/2W J
△ R1582	NRSA02J-223X	MG R	22kΩ 1/10W J
R1583	NRSA02J-393X	MG R	39kΩ 1/10W J
R1651	NRSA02J-472X	MG R	4.7kΩ 1/10W J
R1652	NRSA02J-102X	MG R	1kΩ 1/10W J
R1653	NRSA02J-331X	MG R	330Ω 1/10W J
R1654	NRSA02J-223X	MG R	22kΩ 1/10W J
R1655	NRSA02J-473X	MG R	47kΩ 1/10W J
R1656	NRSA02J-822X	MG R	8.2kΩ 1/10W J
R1657	NRSA02J-222X	MG R	2.2kΩ 1/10W J
R1658	NRSA02J-222X	MG R	2.2kΩ 1/10W J
R1659	QRE122J-4R7	C R	4.7Ω 1/2W J
R1660	NRSA02J-153X	MG R	15kΩ 1/10W J
R1661	QRE122J-271	C R	270Ω 1/2W J
R1662	QRE122J-271	C R	270Ω 1/2W J
R1664	NRSA02J-682X	MG R	6.8kΩ 1/10W J
R1665	NRSA02J-103X	MG R	10kΩ 1/10W J
R1666	NRSA02J-101X	MG R	100Ω 1/10W J
R1667	QRE122J-101	C R	100Ω 1/2W J
R1668	QRT029J-5R6	MF R	5.6Ω 2W J
R1701	NRSA02J-562X	MG R	5.6kΩ 1/10W J
R1702	NRSA02J-682X	MG R	6.8kΩ 1/10W J
R1703	NRSA02J-392X	MG R	3.9kΩ 1/10W J
R1704	NRSA02J-221X	MG R	220Ω 1/10W J
R1705	NRSA02J-221X	MG R	220Ω 1/10W J
R1706	NRSA02J-561X	MG R	560Ω 1/10W J
R1707	NRSA02J-561X	MG R	560Ω 1/10W J
R1708	NRSA02J-102X	MG R	1kΩ 1/10W J
R1709	NRSA02J-472X	MG R	4.7kΩ 1/10W J
R1710	NRSA02J-472X	MG R	4.7kΩ 1/10W J
R1711	NRSA02J-472X	MG R	4.7kΩ 1/10W J
R1712	NRSA02J-472X	MG R	4.7kΩ 1/10W J
R1713	NRSA02J-472X	MG R	4.7kΩ 1/10W J
R1714	NRSA02J-472X	MG R	4.7kΩ 1/10W J
R1715	NRSA02J-221X	MG R	220Ω 1/10W J
R1716	NRSA02J-221X	MG R	220Ω 1/10W J
R1718	NRSA02J-561X	MG R	560Ω 1/10W J
R1719	NRSA02J-102X	MG R	1kΩ 1/10W J
R1720	NRSA02J-472X	MG R	4.7kΩ 1/10W J
R1721	NRSA02J-103X	MG R	10kΩ 1/10W J
△ R1723	QRL039J-270	OM R	27Ω 3W J
R1725	NRSA02J-102X	MG R	1kΩ 1/10W J
R1726	NRSA02J-472X	MG R	4.7kΩ 1/10W J
R1727	NRSA02J-153X	MG R	15kΩ 1/10W J
R1728	NRSA02J-102X	MG R	1kΩ 1/10W J
R1729	NRSA02J-102X	MG R	1kΩ 1/10W J
R1730	NRSA02J-103X	MG R	10kΩ 1/10W J
R1731	NRSA02J-472X	MG R	4.7kΩ 1/10W J
R1736	NRSA02J-823X	MG R	82kΩ 1/10W J
R1737	NRSA02J-104X	MG R	100kΩ 1/10W J
R1738	NRSA02J-103X	MG R	10kΩ 1/10W J
R1739	NRSA02J-103X	MG R	10kΩ 1/10W J
R1740	NRSA02J-392X	MG R	3.9kΩ 1/10W J
R1741	NRSA02J-561X	MG R	560Ω 1/10W J
R1742	NRSA02J-563X	MG R	56kΩ 1/10W J
R1746	NRSA02J-103X	MG R	10kΩ 1/10W J
R1747	NRSA02J-0R0X	MG R	0.0Ω 1/10W J
R1748	NRSA02J-101X	MG R	100Ω 1/10W J
R1749	NRSA02J-472X	MG R	4.7kΩ 1/10W J

△ Symbol No.	Part No.	Part Name	Description
<b>RESISTOR</b>			
R1771	NRSA02J-821X	MG R	820Ω 1/10W J
R1772	NRSA02J-821X	MG R	820Ω 1/10W J
R1791	NRSA02J-221X	MG R	220Ω 1/10W J
R1792	NRSA02J-221X	MG R	220Ω 1/10W J
R1793	NRSA02J-221X	MG R	220Ω 1/10W J
R1794	NRSA02J-221X	MG R	220Ω 1/10W J
R1795	NRSA02J-221X	MG R	220Ω 1/10W J
R1796	NRSA02J-103X	MG R	10kΩ 1/10W J
R1797	NRSA02J-153X	MG R	15kΩ 1/10W J
R1802	NRSA02J-750X	MG R	75Ω 1/10W J
R1806	QRE12J-271	C R	270Ω 1/2W J
R1807	NRSA02J-680X	MG R	68Ω 1/10W J
R1810	QRG01GJ-560	OM R	56Ω 1W J
R1811	NRSA02J-221X	MG R	220Ω 1/10W J
R1815	QRE12J-181Y	C R	180Ω 1/2W J
R1816	NRSA02J-681X	MG R	680Ω 1/10W J
R1817	NRSA02J-472X	MG R	4.7kΩ 1/10W J
△ R1901	QRF074K-487	UNF R	4.7Ω 7W K
R1903	QRL029J-683	OM R	68kΩ 2W J
R1904	QRL039J-151	OM R	150Ω 3W J
R1921	QRE12J-681	C R	680Ω 1/2W J
△ R1922	QRT029J-1R8	MF R	1.8Ω 2W J
R1923	QRM059J-R33	MP R	0.33Ω 5W J
R1926	NRSA02J-222X	MG R	2.2kΩ 1/10W J
R1928	QRL039J-563	OM R	56kΩ 3W J
R1929	QRE12J-822	C R	8.2kΩ 1/2W J
R1933	QRE12J-120Y	C R	12Ω 1/2W J
R1936	QRG01GJ-561	OM R	560Ω 1W J
R1941	QRE12J-821	C R	820Ω 1/2W J
R1942	NRSA02J-101X	MG R	100Ω 1/10W J
R1943	NRSA02J-473X	MG R	47kΩ 1/10W J
R1944	NRSA02J-103X	MG R	10kΩ 1/10W J
R1974	NRSA02J-222X	MG R	2.2kΩ 1/10W J
R1976	QRT029J-8R2	MF R	8.2Ω 2W J
R1977	QRE12J-122	C R	1.2kΩ 1/2W J
R1978	NRSA02J-473X	MG R	47kΩ 1/10W J
R1979	QRL039J-470	OM R	47Ω 3W J
R1980	QRL029J-103	OM R	10kΩ 2W J
△ R1991	QRZ9046-825Z	C R	8.2MΩ 1/2W K

<b>CAPACITOR</b>			
C1001	QETMLHM-106	E CAP.	10μF 50V M
C1002	NCB21HK-103X	C CAP.	0.01μF 50V K
C1004	QETMLCM-477	E CAP.	470μF 16V M
C1005	QFV81HJ-104	MF CAP.	0.1μF 50V J
C1008	QETMLHM-475	E CAP.	4.7μF 50V M
C1103	QETMLEM-476	E CAP.	47μF 25V M
C1104	NCB21HK-472X	C CAP.	4700pF 50V K
C1105	NCB21HK-472X	C CAP.	4700pF 50V K
C1106	NCB21HK-472X	C CAP.	4700pF 50V K
C1107	NCB21HK-472X	C CAP.	4700pF 50V K
C1110	NRSA02J-0R0X	MG R	0.0Ω 1/10W J
C1112	QETMLEM-476	E CAP.	47μF 25V M
C1113	NCB21HK-472X	C CAP.	4700pF 50V K
C1115	NCB21HK-103X	C CAP.	0.01μF 50V K
C1116	NCB21HK-103X	C CAP.	0.01μF 50V K
C1117	QFV81HJ-224	MF CAP.	0.22μF 50V J
C1119	QETMLHM-474	E CAP.	0.47μF 50V M
C1120	NDC21HJ-121X	C CAP.	120pF 50V J
C1121	NCB21HK-103X	C CAP.	0.01μF 50V K
C1122	NCB21HK-103X	C CAP.	0.01μF 50V K
C1162	NCB21HK-152X	C CAP.	1500pF 50V K
C1301	NCB21HK-123X	C CAP.	0.012μF 50V K
C1302	QETMLHM-475	E CAP.	4.7μF 50V M
C1303	NDC21HJ-100X	C CAP.	100pF 50V J
C1304	QFV81HJ-474	MF CAP.	0.47μF 50V J
C1305	QETMLHM-474	E CAP.	0.47μF 50V M
C1306	NCB21HK-103X	C CAP.	0.01μF 50V K
C1307	QETMLCM-477	E CAP.	470μF 16V M
C1308	QETMLCM-107	E CAP.	100μF 16V M
C1309	NCB21HK-103X	C CAP.	0.01μF 50V K
C1310	NDC21HJ-221X	C CAP.	220pF 50V J
C1311	NCB21HK-103X	C CAP.	0.01μF 50V K
C1312	QENBLHM-474Z	E CAP.	0.47μF 50V M

△ Symbol No.	Part No.	Part Name	Description
<b>CAPACITOR</b>			
C1313	QETMLHM-335	E CAP.	3.3μF 50V M
C1314	NCB21HK-103X	C CAP.	0.01μF 50V K
C1315	QETMLCM-107	E CAP.	100μF 16V M
C1316	QETMLHM-106	E CAP.	10μF 50V M
C1317	NCB21HK-473X	C CAP.	0.047μF 50V K
C1321	NDC21HJ-120X	C CAP.	12pF 50V J
C1322	NCB21EK-273X	C CAP.	0.027μF 25V K
C1323	QETMLHM-474	E CAP.	0.47μF 50V M
C1324	QETMLHM-106	E CAP.	10μF 50V M
C1325	QENBLHM-106	BP E CAP.	10μF 50V M
C1326	NCS21HJ-221X	C CAP.	220pF 50V J
C1341	QETMLHM-106	E CAP.	10μF 50V M
△ C1352	QFZ0097-103	MM CAP.	0.01μF 1250V K
C1354	NDC21HJ-271X	C CAP.	270pF 50V J
C1355	NDC21HJ-221X	C CAP.	220pF 50V J
C1356	NDC21HJ-331X	C CAP.	330pF 50V J
C1357	QETMLAM-477	E CAP.	470μF 10V M
C1365	QENBLHM-105	BP E CAP.	1μF 50V M
C1366	QENBLHM-105	BP E CAP.	1μF 50V M
C1367	QENBLHM-105	BP E CAP.	1μF 50V M
C1401	QFV81HJ-474	MF CAP.	0.47μF 50V J
C1423	QCS32HJ-180Z	C CAP.	18pF 500V J
C1424	QFLB2AJ-103	M CAP.	0.01μF 100V J
C1426	QFLB1HJ-102	M CAP.	1000pF 50V J
C1427	QETMLVM-107	E CAP.	100μF 35V M
C1428	QETMLVM-107	E CAP.	100μF 35V M
C1429	QETMLHM-106	E CAP.	10μF 50V M
C1430	QFLC2AJ-472Z	M CAP.	4700pF 100V J
C1433	QETMLHM-475	E CAP.	4.7μF 50V M
C1435	QETMLEM-228	E CAP.	2200μF 25V M
C1436	QFV81HJ-334	MF CAP.	0.33μF 50V J
C1437	NCB21HK-104X	C CAP.	0.1μF 50V K
C1501	QETMLAM-477	E CAP.	470μF 10V M
C1502	NCB21HK-103X	C CAP.	0.01μF 50V K
C1508	QETMLHM-106	E CAP.	10μF 50V M
C1523	QETMLEM-476	E CAP.	47μF 25V M
△ C1525	QFZ0200-972	MPP CAP.	9700pF 1.5kVH±3%
C1526	QFLB1HJ-103	M CAP.	0.01μF 50V J
△ C1527	QFZ0199-334	MPP CAP.	0.33μF 250V J
C1529	QFLB2AJ-102	M CAP.	1000pF 100V J
C1531	QEZ0203-107	E CAP.	100μF 160V M
C1552	QETMLVM-108	E CAP.	1000pF 35V M
C1554	QETM2EM-475	E CAP.	4.7μF 250V M
C1555	QFLC2AJ-104Z	M CAP.	0.1μF 100V J
C1571	QETMLAM-107	E CAP.	100μF 10V M
C1572	QETMLEM-476	E CAP.	47μF 25V M
C1581	QFV81HJ-104	MF CAP.	0.1μF 50V J
C1652	NCB21HK-473X	C CAP.	0.047μF 50V K
C1653	QETMLHM-106	E CAP.	10μF 50V M
C1654	QETMLCM-477	E CAP.	470μF 16V M
C1655	QETMLHM-106	E CAP.	10μF 50V M
C1656	QENBLHM-105	BP E CAP.	1μF 50V M
C1657	QETMLEM-107	E CAP.	100μF 250V M
C1658	QETMLEM-227	E CAP.	220μF 250V M
C1659	QETMLHM-475	E CAP.	4.7μF 50V M
C1663	NCB21HK-102X	C CAP.	1000pF 50V K
C1664	QETMLCM-107	E CAP.	100μF 16V M
C1665	NCB21HK-103X	C CAP.	0.01μF 50V K
C1701	QETMLHM-106	E CAP.	10μF 50V M
C1705	QETMLCM-477	E CAP.	470μF 16V M
C1706	NCB21EK-104X	C CAP.	0.1μF 25V K
C1707	NCB21HK-103X	C CAP.	0.01μF 50V K
C1708	QETMLEM-476	E CAP.	47μF 25V M
C1709	NCB21HK-103X	C CAP.	0.01μF 50V K
C1710	QETMLCM-107	E CAP.	100μF 16V M
C1711	NCB21HK-103X	C CAP.	0.01μF 50V K
C1712	NCB21HK-103X	C CAP.	0.01μF 50V K
C1713	NCB21HK-103X	C CAP.	0.01μF 50V K
C1716	NDC21HJ-181X	C CAP.	180pF 50V J
C1717	NDC21HJ-181X	C CAP.	180pF 50V J
C1718	NCB21HK-103X	C CAP.	0.01μF 50V K
C1719	QETMLHM-105	E CAP.	1μF 50V M
C1720	NCB21HK-103X	C CAP.	0.01μF 50V K
C1721	NCB21EK-333X	C CAP.	0.033μF 25V K
C1722	NDC21HJ-101X	C CAP.	100pF 50V J
C1724	NDC21HJ-560X	C CAP.	56pF 50V J

△ Symbol No.	Part No.	Part Name	Description
<b>CAPACITOR</b>			
C1728	NDC21HJ-181X	C CAP.	180pF 50V J
C1729	NDC21HJ-181X	C CAP.	180pF 50V J
C1730	NCB21HK-103X	C CAP.	0.01μF 50V K
C1744	NCB21HK-103X	C CAP.	0.01μF 50V K
C1805	QETMLCM-227	E CAP.	220μF 16V M
C1806	QETMLCM-477	E CAP.	470μF 16V M
C1811	QETMLHM-106	E CAP.	10μF 50V M
C1841	NCB21HK-152X	C CAP.	1500pF 50V K
△ C1901	QFZ9075-104	MPP CAP.	0.1μFAC275V M
△ C1904	QCZ9015-102	C CAP.	1000pFAC250V Z
△ C1905	QCZ9015-102	C CAP.	1000pFAC250V Z
△ C1907	QCZ9015-102	C CAP.	1000pFAC250V Z
△ C1909	QEZO52-127	E CAP.	120μF 400V M
△ C1910	QFZ9075-473	MPP CAP.	0.047μFAC275V M
C1922	QFLBLHJ-471	M CAP.	470pF 50V J
C1924	QETMLVM-107	E CAP.	100μF 35V M
C1926	QFLCLHJ-332Z	M CAP.	3300pF 50V J
C1928	NCB21HK-473X	C CAP.	0.047μF 50V K
C1929	QFP32GJ-223Z	PP CAP.	0.022μF 400V J
C1930	QCZ0325-561	C CAP.	560pF 2kV K
C1931	QCZ0325-151	C CAP.	150pF 2kV K
C1932	QCZ0325-151	C CAP.	150pF 2kV K
C1941	QCZ0325-561	C CAP.	560pF 2kV K
C1942	QEZO03-107	E CAP.	100μF 160V M
C1945	QEHQLEM-108	E CAP.	1000μF 25V M
C1946	QETMLEM-477	E CAP.	470μF 25V M
C1948	QETMLEM-108	E CAP.	1000μF 25V M
C1949	NDC21HJ-471X	C CAP.	470pF 50V J
C1950	NCB21HK-104X	C CAP.	0.1μF 50V K
C1971	QETMLHM-106	E CAP.	10μF 50V M
C1976	QETMLEM-227	E CAP.	220μF 25V M
C1977	QETMLCM-227	E CAP.	220μF 16V M
C1978	QETMLEM-227	E CAP.	220μF 25V M
C1979	QETMLAM-227	E CAP.	220μF 10V M
△ C1991	QCZ9079-471	C CAP.	470pFAC250V K
△ C1992	QCZ9079-471	C CAP.	470pFAC250V K
△ C1993	QCZ9079-102	C CAP.	1000pFAC250V M

<b>TRANSF</b>			
T1501	QQR1244-001	DRIVE TRANSF	
△ T1522	QQH0102-001	FB TRANSF	
△ T1921	QQS0111-001	SW TRANSF	

<b>COIL</b>			
L1001	QQL242K-8R2	COIL	8.2μH K
L1101	QQL244J-2R2Z	COIL	2.2μH J
L1103	QQL242K-8R2	COIL	8.2μH K
L1551	QQL2026-240	INDUCTOR	
L1701	QQL242K-5R6	COIL	5.6μH K
L1941	QQL26AK-820Z	COIL	82μH K
L1942	QQL26AK-820Z	COIL	82μH K
L1943	QQL26AK-820Z	COIL	82μH K

<b>DIODE</b>			
D1001	MTZJ33A-T2	ZENER DIODE	
D1301	MTZJ9.1B-T2	ZENER DIODE	
D1302	MTZJ9.1B-T2	ZENER DIODE	
D1305	D1N54-T2	SI DIODE	
D1341	MA111-X	SI DIODE	
D1421	MTZJ75-T2	ZENER DIODE	
D1423	1SR124-400A-T2	SI DIODE	
D1425	MA111-X	SI DIODE	
D1427	MTZJ27B-T2	ZENER DIODE	
D1551	RGP10J-TS-T3	SI DIODE	
D1552	RH15-T3	SI DIODE	
D1553	MTZJ9.1B-T2	ZENER DIODE	
D1554	MA111-X	SI DIODE	
D1571	MTZJ7.5S-T2	ZENER DIODE	
D1581	MTZJ20B-T2	ZENER DIODE	
D1582	RGP10J-TS-T3	SI DIODE	
D1651	MA111-X	SI DIODE	
D1652	MTZJ12C-T2	ZENER DIODE	
D1653	MA111-X	SI DIODE	
D1654	MTZJ12C-T2	ZENER DIODE	
D1655	MA111-X	SI DIODE	

△ Symbol No.	Part No.	Part Name	Description
<b>DIODE</b>			
D1656	MA111-X	SI DIODE	
D1657	MA111-X	SI DIODE	
D1701	MA111-X	SI DIODE	
D1704	SLR-342VR-T16	LED	
D1705	SLR-342DU-T16	LED(ORG)	
D1707	MA111-X	SI DIODE	
D1731	MA111-X	SI DIODE	
△ D1901	G25BA60	BRIDGE DIODE	
D1921	RGP10J-TS-T3	SI DIODE	
D1922	MA111-X	SI DIODE	
D1923	MA111-X	SI DIODE	
D1924	MA111-X	SI DIODE	
D1926	MTZJ5.6B-T2	ZENER DIODE	
D1929	MTZJ12C-T2	ZENER DIODE	
D1930	EG1A-T3	SI DIODE	
D1932	MA111-X	SI DIODE	
D1933	MTZJ27B-T2	ZENER DIODE	
D1941	RU3AM-LFC4	SI DIODE	
D1942	RU3AM-LFC4	SI DIODE	
D1943	RGP10J-TS-T3	SI DIODE	
D1945	MTZJ11A-T2	ZENER DIODE	
D1982	MA111-X	SI DIODE	
D1983	MA111-X	SI DIODE	

<b>TRANSISTOR</b>			
Q1102	2SC5083/L-P/-T	TRANSISTOR	
Q1301	2SB709A/QR/-X	TRANSISTOR	
Q1302	2SD601A/QR/-X	TRANSISTOR	
Q1351	STC344-T	TRANSISTOR	
Q1352	STC344-T	TRANSISTOR	
Q1353	STC344-T	TRANSISTOR	
Q1401	DTC124ESA-T	DIGI TRANSISTOR	
Q1402	2SD601A/QR/-X	TRANSISTOR	
Q1521	2SC2655/Y/-T	TRANSISTOR	
△ Q1522	2SD2627-YB11	POWER TRANSISTOR	H.OUT
Q1571	2SA1208/ST/Z1-T	TRANSISTOR	
Q1572	2SD601A/QR/-X	TRANSISTOR	
Q1651	2SD601A/QR/-X	TRANSISTOR	
Q1652	2SD601A/QR/-X	TRANSISTOR	
Q1653	2SB709A/QR/-X	TRANSISTOR	
Q1702	2SD601A/QR/-X	TRANSISTOR	
Q1703	2SD601A/QR/-X	TRANSISTOR	
Q1708	UN2212-X	DIGI TRANSISTOR	
Q1709	2SB709A/QR/-X	TRANSISTOR	
Q1803	2SC1815/YG/-T	TRANSISTOR	
Q1804	2SD601A/QR/-X	TRANSISTOR	
Q1941	2SD601A/QR/-X	TRANSISTOR	
Q1943	UN2211-X	DIGI TRANSISTOR	
Q1974	2SA966/OY/-T	TRANSISTOR	
Q1975	UN2212-X	DIGI TRANSISTOR	

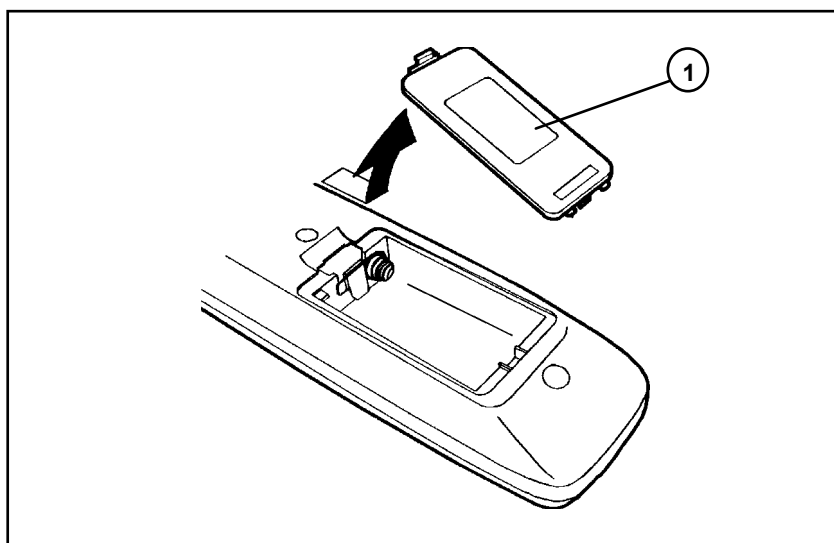
<b>IC</b>			
IC1301	NN5198K	IC	
IC1421	AN5522	IC	
IC1651	AN5265	IC	
IC1701	MN1873287JE	IC(MCU)	
IC1702	AT24C08-210TT2	IC	(SERVICE)
IC1703	L78L05E-MA	IC	
IC1704	PIC-47143SY	IR DETECT UNIT	
IC1921	STR-G6651	IC(HYBRID)	
IC1941	SE115N-LF12	IC	
IC1971	BA17809T	IC	
IC1972	BA17805T	IC	

<b>OTHERS</b>			
	LC30114-001C-H	LED HOLDER	
	CM35921-B02	CDS HOLDER	
△ CP1981	ICP-A25-Y	IC PROTECTOR	
△ CP1982	ICP-A75-Y	IC PROTECTOR	
△ F1901	QMF51E2-3R15J4	FUSE	3.15A (x2)
FC1901	CEM002-001Z	FUSE CLIP	
J1002	QNN0884-001	PIN JACK	
J1003	QNN0281-003	PIN JACK	
J1004	QNN0281-002	PIN JACK	
J1005	QNS0197-001	3.5 JACK	
K1351	QQR0621-002Z	FERRITE BEADS	
K1421	QQR1113-001Z	FERRITE BEADS	

△ Symbol No.	Part No.	Part Name	Description
<b>OTHERS</b>			
K1921	QOR1113-001Z	FERRITE BEADS	
K1922	QOR1113-001Z	FERRITE BEADS	
K1923	QOR1114-001Z	FERRITE BEADS	
K1924	QOR1113-001Z	FERRITE BEADS	
K1941	QOR1113-001Z	FERRITE BEADS	
K1942	QOR1113-001Z	FERRITE BEADS	
K1943	QOR1113-001Z	FERRITE BEADS	
△ LF1901	QOR0527-00Z	LINE FILTER	
PC1701	PI241-04	C.D.S.	
△ PC1921	PC123F2	IC (PHOTO COUPLER)	
S1701	QSW0619-003Z	PUSH SWITCH	VOL+
S1702	QSW0619-003Z	PUSH SWITCH	VOL-
S1703	QSW0619-003Z	PUSH SWITCH	CH+
S1704	QSW0619-003Z	PUSH SWITCH	CH-
S1705	QSW0619-003Z	PUSH SWITCH	MENU
△ S1901	QSW0750-001	PUSH SWITCH	POWER SW
SF1102	QAX0666-00Z	SAW FILTER	
SF1122	QAX0325-001	SAW FILTER	
△ SK1351	QNZ0537-001	CRT SOCKET	
△ TH1901	QAD0121-9R0	P THERMISTOR	
TU1001	QAU0185-004	TUNER	
△ VA1901	ERZV10V621CS	VARISTAL	
X1302	CE42690-001Z	CRYSTAL	
X1701	QAX0307-001	CER. RESONATOR	

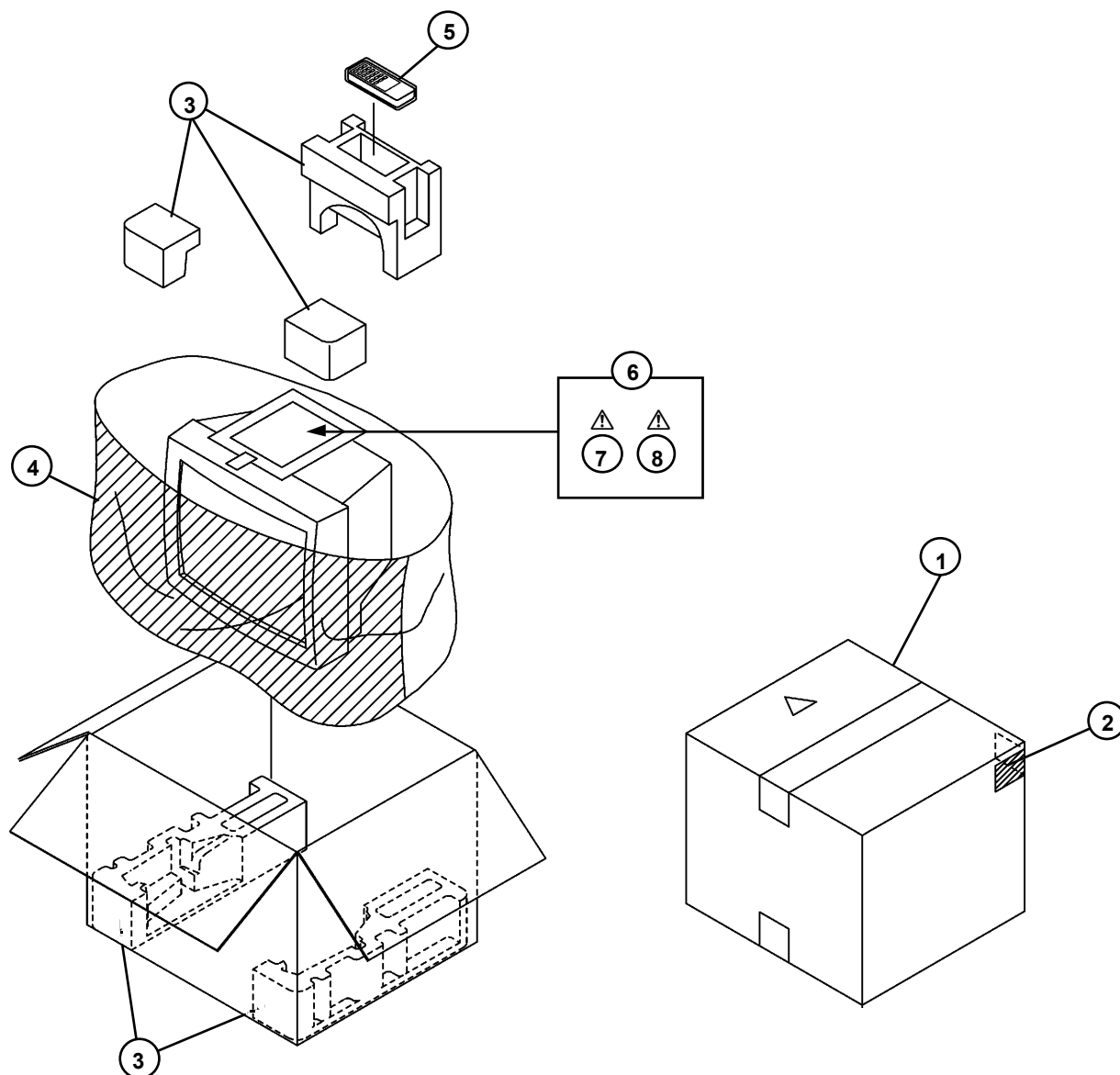
## REMOTE CONTROL UNIT PARTS LIST (RM-C364GY-1H)

△ Ref.No.	Part No.	Part Name.	Description
1	25-1168F	BATTERY COVER	





## PACKING



## PACKING PARTS LIST

△ Ref.No.	Part No.	Part Name	Description
1	GG10056-048A-H	PACKING CASE	5pcs in 1set
2	CM47385-00A	POS. SERIAL LABE	
3	CP11667-00A	CUSHION ASSY	
4	CP30967-003-H	POLY BAG	
5	RM-C364GY-1H	REMOCON UNIT	
6	QPA02503505P	POLY BAG	
△ 7	LCT1039-001A-H	INST BOOK	
△ 8	LCT1034-001B-H	DIGEST MANUAL	



VICTOR COMPANY OF JAPAN, LIMITED  
HOME AV NETWORK BUSINESS UNIT

12, 3-chome, Moriya-cho, Kanagawa-ku, Yokohama, Kanagawa-prefecture, 221-8528, Japan

AV-21A10-F



VP 0207  
DP7058